



# Holistic approach to ERM

SoftConsulting  s.p.

Autor: Lejla Softić, dipl.oec.  
Konsultant za poslovni razvoj





# Holistic approach to risk management

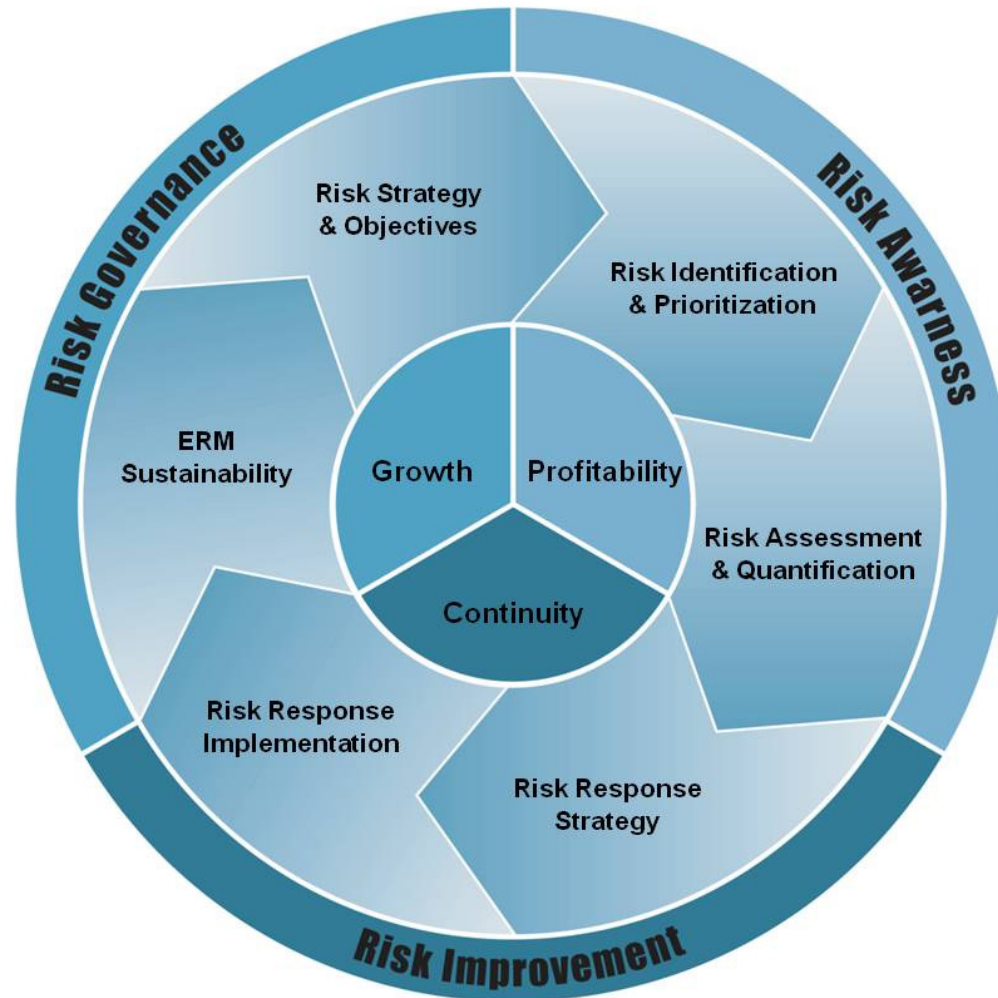


# Enterprise Risk Management (ERM)



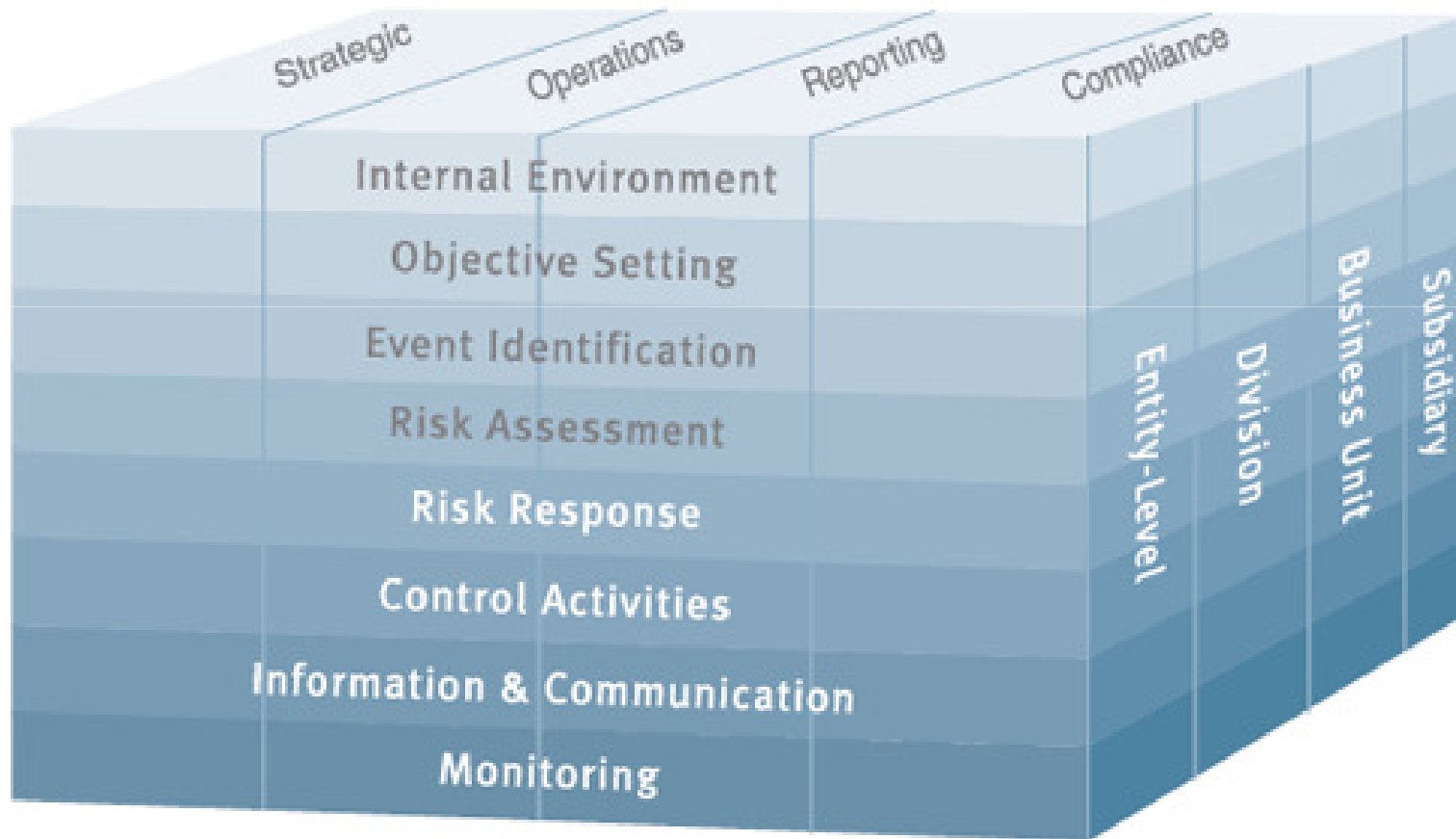


# ERM - three main pillars





# ERM intergrated framework



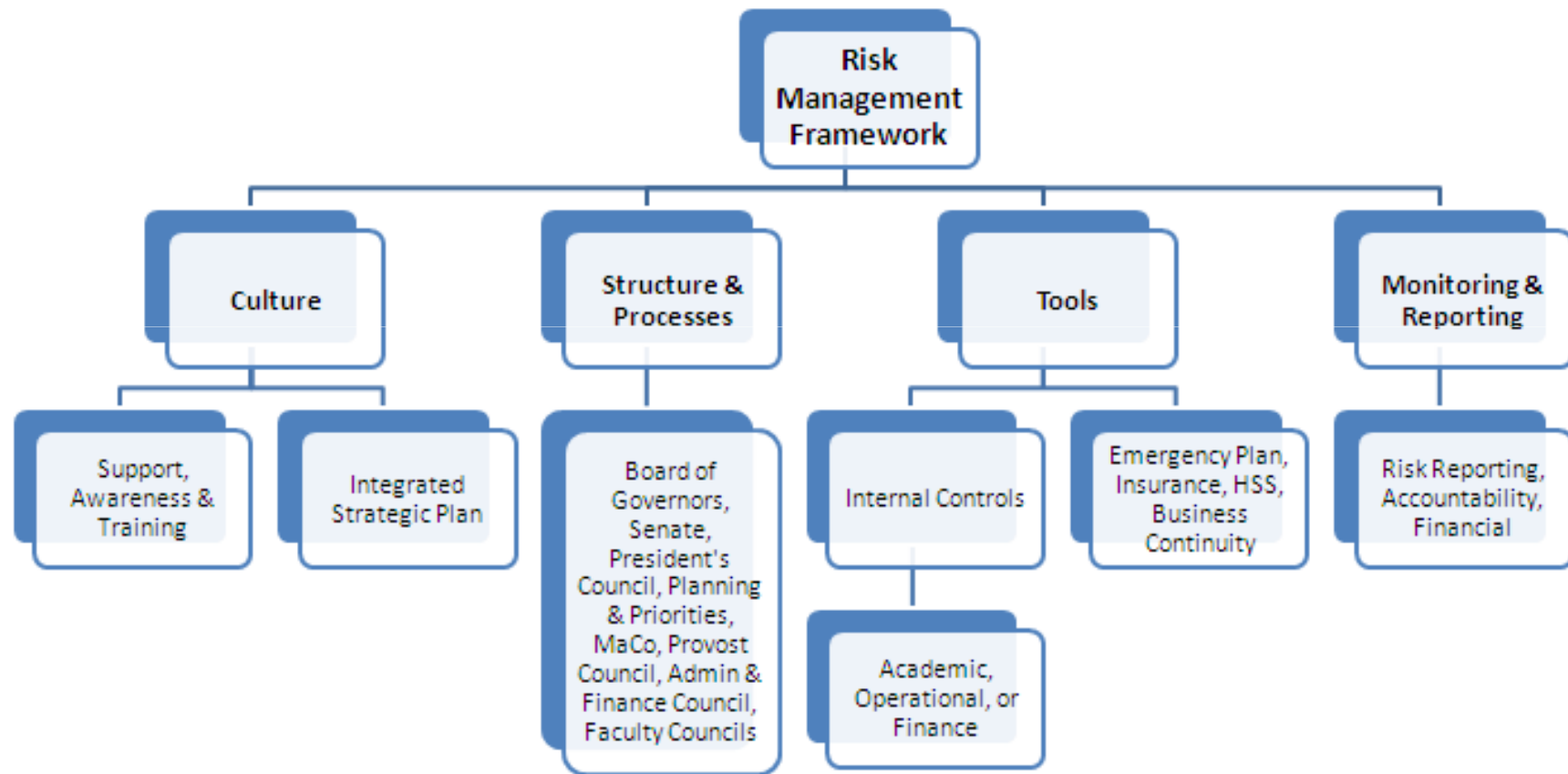


## 8 interrelated components of an ERM

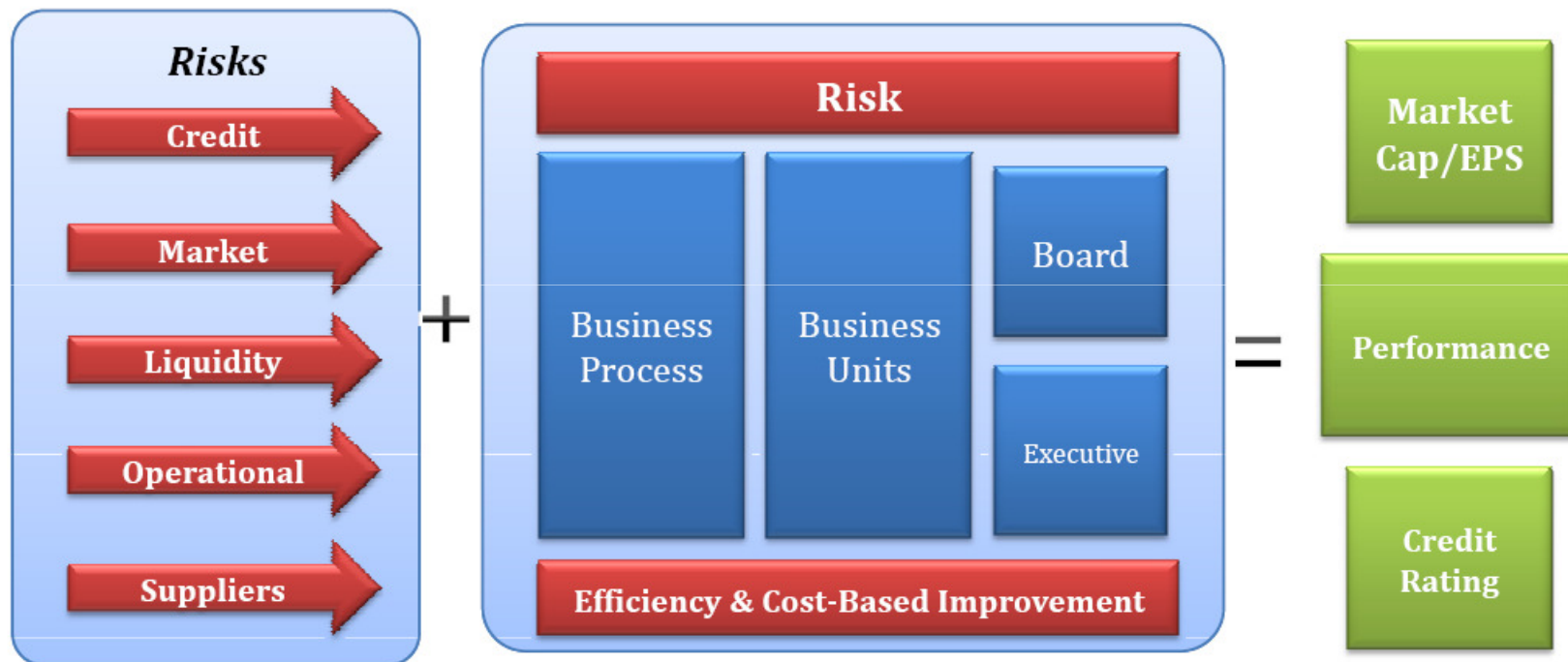




# Risk Management Framework

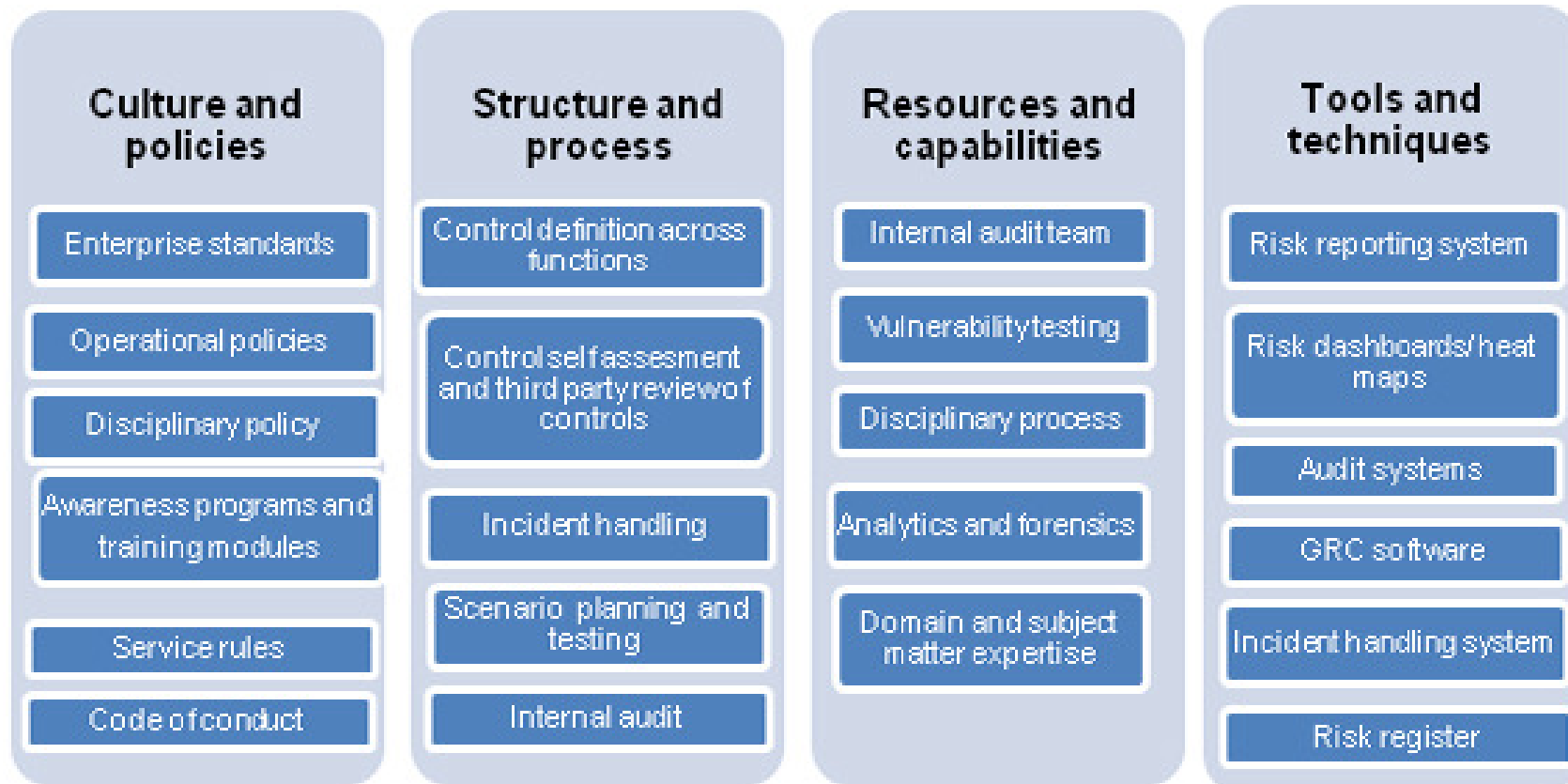


# Why is Risk a Key Business Issue?

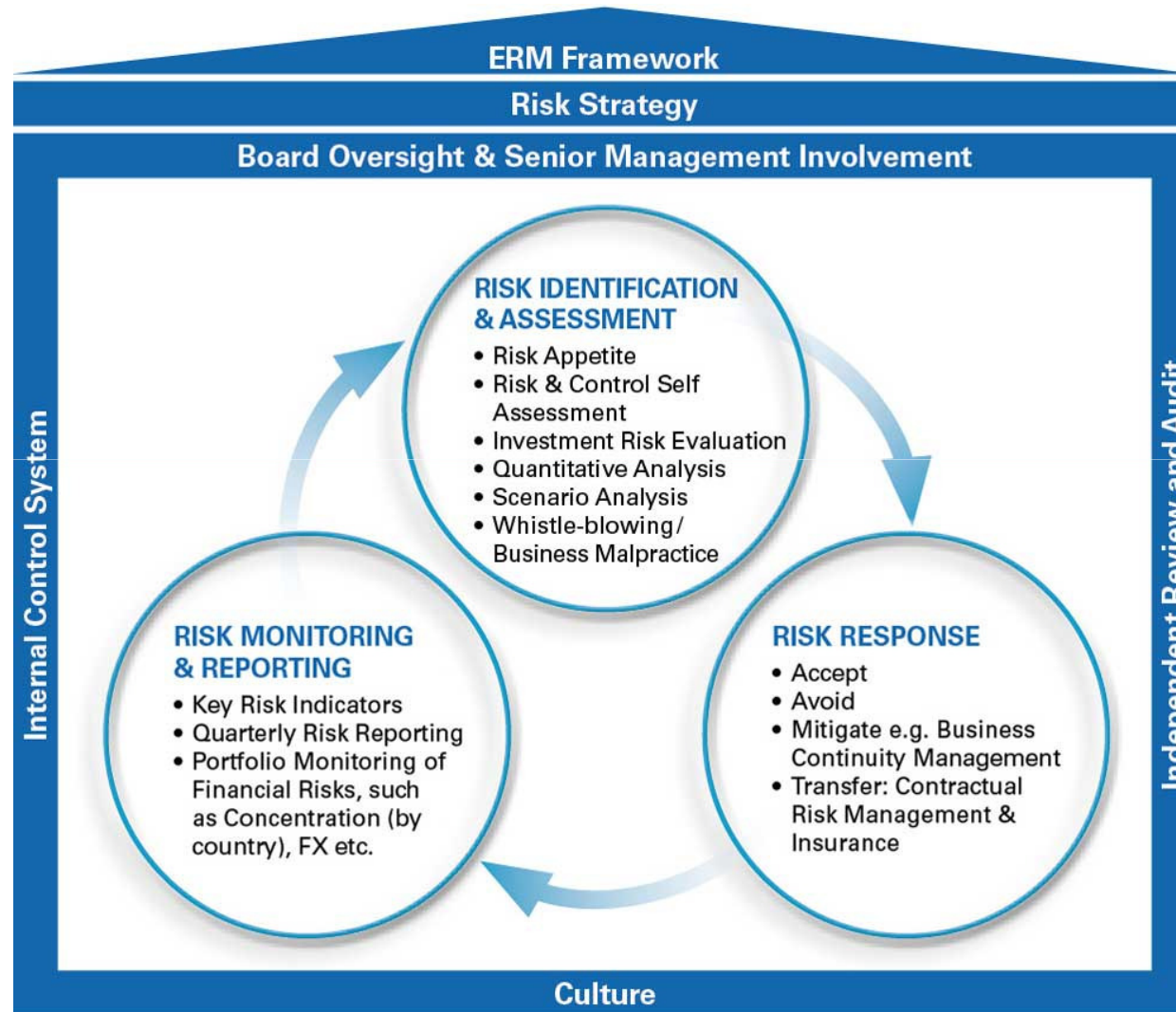




# Key dimensions of ERM



# ERM Framework





## Zaključak

- Šta je ERM ?
- Koje su ključne dimenzije ERM-a ?
- Zašto je bitan holistički pristup ERM-u ?



Hvala na ukazanom povjerenju !

○ Kontakt:

- [lejla.softic@savjetnik.ba](mailto:lejla.softic@savjetnik.ba)
- 061/897-262